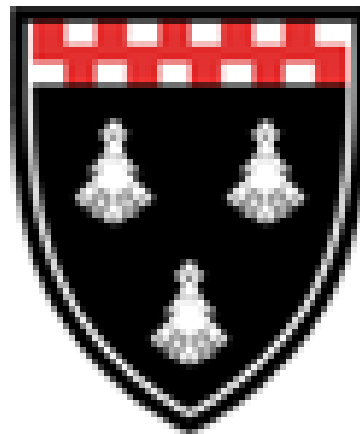




Ponteland Community High School

Extra-curricular clubs, activities and trips

Summer Term 2025



Extra-curricular clubs, activities and trips

- Included in this brochure is information regarding:
 - 1) PE Department Activities
 - 2) Music Department Activities
 - 3) Other activities by day
 - 4) Study support sessions
 - 5) Use of the library and base areas.
 - 6) Educational trips and visits.
- Please note:
 - Sports training, practices and matches are seasonal and may change later in the year
 - Check the PE noticeboard or speak to the PE staff for updates throughout the school year.
 - We do our best to keep students informed but the best way to find out what is going on is to check the different noticeboards throughout the school and speaking to staff members who run different activities.
 - If information is not available or you are interested in a certain activity that is not included here, please talk to a teacher from that curriculum or subject area.

PE Department Enrichment, Physical Activity & School Sport Programme

	Morning (8:00-8:45am)	Lunch (12:45-2:10pm)	After School (3:30-4:30pm)
Monday		Boys Futsal Football (Y8-9) Hall 4G	
Tuesday		Football (Y10-11) 4G	Athletics (All Years) Tennis (All Years) Badminton Touch Rugby Outside MUGA SH 4G
Wednesday	Futsal (Year 7 & 8) SH	Football (Y7-8) 4G	Basketball (All Years) Rounders (All Years) Golf Hal Outside Outside
Thursday		Football (Y7 & 9) 4G	Cricket (Girls) Cricket (Boys) Tennis (All Years) Sports Hall Outside MUGA
Friday	Cricket SH	Football (Y10-11) 4G	

PE Department Enrichment, Physical Activity & School Sport Programme

Frequently Asked Questions

Enrichment activities are available for **ALL** students and we have tried to offer a wide range of activities to meet the needs of as many students as possible. Each session is designed for specific year groups and where all year groups are welcome, sessions will take place in individual year groups.

All sessions will begin around 3:30pm and finish by 4:30pm. Students must wear PE kit and bring appropriate footwear and protective equipment (i.e. shinpads, gum shields etc.). Students must arrive at the changing rooms and for new students ensure you remind your parents/carers that you are attending. At the end of the session you do not need to get changed into uniform but remember to take your belongings home with you. For those students attending morning sessions attend school in your PE kit but ensure you change into your uniform ready for school.

All students are welcome to all sessions but please be aware of the type of sessions we are offering. We are very hopeful that inter school competition will start soon and some students will be selected to represent the school in various teams. Students selected will be those who attend sessions or take responsibility for informing us of reasons why they are unable to attend.

Some sessions will involve staff from around the school who have kindly offered their time to support the programme as well as young leaders from 6th form and upper school who have expressed an interest in developing their leadership skills. We also have some additional coaches who will lead sessions specifically in certain sporting activities. We expect all students to respect the people leading the sessions

Please note that the following sessions require students to sign up prior to the session.

Trampolining (Monday for Y8 + Y9 & Wednesday for Year 7) – Sessions cost £1.50 per session led by an external coach. Parents can sign up through the Expression of Interest form sent out via email.

Music Department Enrichment Activities Programme

All lunchtime activities are 1.45 until 2.20 in the Drama Studio

Day

Activity

Year Groups

Staff Contact

Lunchtime Activities

Monday

Brass Band

All year groups

Mr Rosier

Tuesday

Wind Band

All year groups

Mr Rosier

Wednesday

Jazz Band

All year groups

Mr Rosier

Thursday

School Choir

All year groups

Mr Murphy

Friday

String Group

All year groups

Mr Murphy

After School Activities

3.25 – 4.30 in the Drama School

Monday

Whistling Sheep
Ceilidh Band

All year groups

Mr Rosier

Other Clubs and Activities

Tuesday

Activity	Run by	When	Where	Year Group(s)	Additional Information
Christian Union	Mrs Digby + Mrs Bunce	1.45 – 2.15	F22	All	
Make £5 Grow	Ms Carr + Ms Brown	3.30 – 4.15	S8	Y7 – Y9	

Wednesday

Activity	Run by	When	Where	Year Group(s)	Additional Information
History of Art	Ms Bambrough	1.45 – 2.15	F2	Y12 + Y13	Staff welcome!
Lego, Meccano + Magnetix	Mrs Briggs	1.45 – 2.15	Library	Y7	
Science Club	Mr Pommells	3.30 – 4.30	G6	Y7 – Y9	
Maths Exam Paper Society	Ms Pickover + Mr Symons	3.30 – 4.30	S15 + s16	Y11	

Thursday

Activity	Run by	When	Where	Year Group(s)	Additional Information
KS5 Book Club	Ms Emmerson	1.45 – 2.15	F1	Y12 + Y13	Staff welcome!
Chess Club	Mrs Briggs	1.45 – 2.15	Library	Y7 – Y10	
Lego, Meccano + Magnetix	Mrs Briggs	3.30 – 4.00	Library	Y7	
KS3 Art Club	Mr Younger	3.25 – 4.25	G8	Y7 – Y9	

Friday

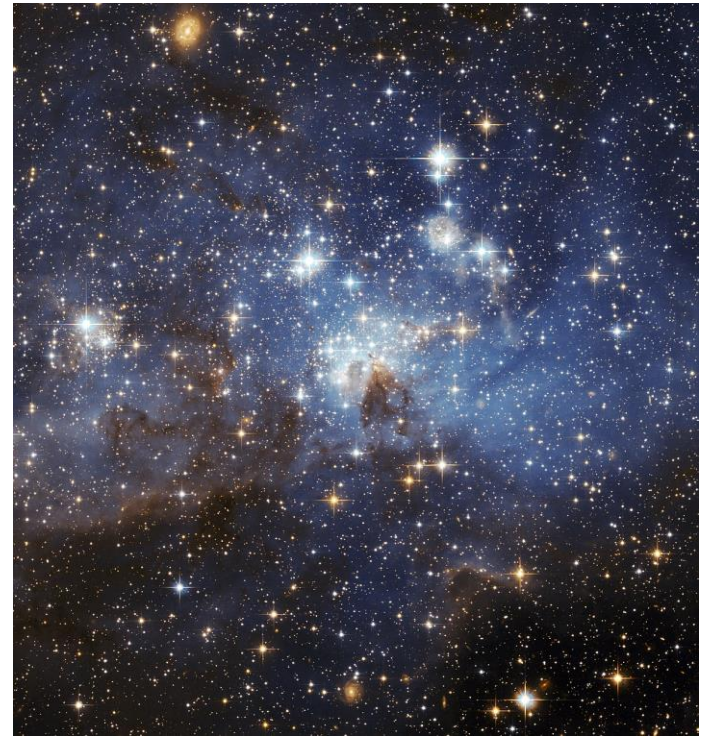
Activity	Run by	When	Where	Year Group(s)	Additional Information
Warhammer Alliance	Mr Clayson	3.30 – 4.45	G7	All	

Special Events!

Y7 Harry Potter Night

19th February

- Get sorted into houses
 - Create potions
 - Play Quidditch



Space Club

First Wednesday of every month

Lecture Theatre

All Year Groups

Come along to find out about new and exciting discoveries from the world of space travel and exploration.



Use of the Library and the Base

Our library area is a key hub of optional activities during break and lunchtime sessions.

Many students use this as an area for quiet reading whilst others prefer to enjoy one of the many board games available. There is an IT area close by where students can access their Google accounts to work on homework tasks. The library is also the home of our Chess Clubs that are attended by many.



Each year group also has an allocated space for our students to relax in a comfortable environment and enjoy the company of friends during social times.

For some students who need a quiet area to withdraw to or the support of specialist staff during a break or lunch time, the Base is available to meet their needs.



The Duke of Edinburgh Award Scheme

At Ponteland High School we offer the Bronze, Silver and Gold DofE award. We offer the Bronze DofE award in year 9, the Silver DofE award in year 10 and the Gold DofE award in 6th form or open Gold for those who wish to progress to Gold but who don't stay on for 6th form study.



We encourage our students to do their DofE – regardless of ability, gender, background or location. Achieving an Award isn't a competition or about being first. It's all about setting personal challenges and pushing personal boundaries. There are four sections to complete at Bronze and Silver level and five at Gold. They involve helping the community/environment, becoming fitter, developing new skills, planning, training for and completing an expedition and, for Gold only, working with a team on a residential activity.

Through our DofE programme young people have fun, make friends, improve their self-esteem and build confidence. They gain essential skills and attributes for work and life such as resilience, problem-solving, team-working, communication and drive, enhancing CVs, university and job applications. For further information Visit our school website under Extra Curricular activities > DofE

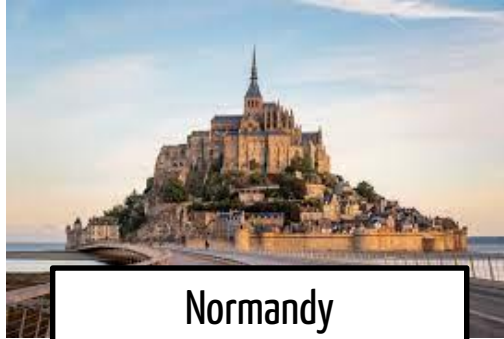


Trips and Visits

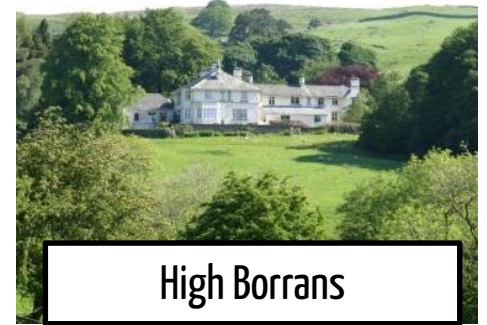
Each year we offer a range of trips and visits. Places are allocated on a trip by trip basis. We keep a record of who has attended each trip so that we can ensure a range of students benefit from the unique learning opportunities they offer.



Berlin



Normandy



High Borrans



New York



Paris



Ski



Iceland



York



Madrid